

# A REQUEST FOR PROPOSAL FOR PROFESSIONAL SERVICES CONTRACT

Department of Highways  
Professional Services Procurement Bulletin 2023-06  
Calloway | 1-80200 | CS-1047

This document constitutes a Request for Proposals for a Professional Service Contract from qualified individuals and organizations to furnish those services as described herein for the Commonwealth of Kentucky, Department of Highways.

## **I. PROJECT DESCRIPTION**

County - Calloway  
Route - CS-1047  
Item No. - 1-80200.00  
Project Description - Address congestion, geometric deficiencies, and access issues from KY-121 to Utterback Road in Murray

## **II. PROJECT INFORMATION**

Project Manager - James Tilley, P.E.  
User Division - Highway Design  
Approximate Fee - \$510,000 Preliminary Engineering & Environmental Services (Lump Sum)  
Project Funding - Federal Funds (STP Funds)  
Project Length - Approximately 1.079 miles

## **III. PURPOSE AND NEED**

This project is to increase safety for pedestrians and bicyclists; alleviate the collision clusters and severity; enhance the road safety features.

This segment of CS-1047 (16th St) serves as a connector to KY-80 down a two-lane road. The shoulders are almost non-existent and there is one sidewalk down half of the project. The south end of the project has residential apartments/townhouses and there is a shopping center that has places to eat. There are a lot of accidents along this route that tends to get busy at certain times of the day with an AADT of 4794. The south end of the project has an area that floods often across the roadway.

## **IV. DBE GOAL**

The Consultant team shall include a DBE Participation Plan with their Response to Announcement to help the Department meet the 11.95% DBE goal established by FHWA. The plan should demonstrate how DBE companies will be mentored or used to assist in the area(s) pertaining to this contract. An additional page will be allowed in the Project Approach (Section 7)

to exhibit this plan. A maximum of four (4) points will be considered in the Evaluation Factors for the DBE Participation Plan.

## **V. SCOPE OF WORK**

The two-lane corridor should be examined for possible widening throughout. With an AADT of 4794 it causes congestion issues. The city as a whole is bike/pedestrian encouraging and we want to continue that with this project. There are collision clusters that will need to be examined and decrease their occurrences whether that would be by sight distance, left/right turn lanes or innovative intersections. There is an area of flooding that will need to be addressed on the south end of the project.

This project may be advanced to Final Design upon the completion of Preliminary Engineering with a Contract Modification. The selected Consultant will then be required to provide engineering services to perform Final Roadway and Structural Design, including the preparation of any design studies, drainage design, right-of-way plans, construction plans, traffic control plans, and cost estimates as well as any other services that KYTC chooses not to perform with in-house forces.

## **VI. SPECIAL INSTRUCTIONS**

The Department may retain any of the advertised services to be performed by in-house state forces.

Instructions for Response to Announcement can be found at:

<https://transportation.ky.gov/ProfessionalServices/Pages/Respond-to-an-Announcement.aspx>

## **VII. AVAILABLE STUDIES**

[DNA Study – Calloway | 1-80200 | CS-1047](#)

[Statewide Bicycle & Pedestrian Master Plan Documents](#)

## **VIII. METHOD OF DESIGN**

The selected Consultant shall utilize the most recent CADD Standards for Highway Plans Policy in the development of the highway plans. Refer to the 2019 CADD Standards for ORD V4 Project Development Memo for information pertaining to the latest CADD Standards and plan submittal.

## **IX. ENVIRONMENTAL SERVICES**

Any necessary Environmental Services are expected to be provided by the Consultant. The anticipated environmental document will be a Categorical Exclusion Level 1. Prequalification of various Environmental Services are required to be identified in the Consultant's Response to Announcement.

## **X. PHOTOGRAMMETRIC SERVICES**

The Consultant will provide mapping and will furnish manuscripts in ORD format. Statewide Elevation data and Aerial photography can be found at the following link [KyFromAbove - Kentucky's Aerial Photography & Elevation Data Program](#). The selected Consultant shall supplement this information with conventional surveying as determined during project scoping.

## **XI. STRUCTURE DESIGN**

Structure Design is not anticipated for Preliminary Design. When the project advances to Final Design and if the selected Consultant is retained for Final Design services, the selected Consultant shall do the necessary engineering services to submit to the KYTC an Advanced Situation Folder(s) for the appropriate structure(s). The selected Consultant may be responsible for any necessary Structure Design services. Structure Design of the proposed structure(s) may be added as a Contract Modification. Prequalification in the area of Structure Design is not required to be identified in the Consultant's Response to Announcement.

## **XII. GEOTECHNICAL SERVICES**

The selected Consultant may provide all Geotechnical Services required for the project. The Preliminary Design contract may include preliminary geotechnical services to review available geological, mining, or other geotechnical information that could influence the selection of the preferred alternate. Geotechnical services necessary for the completion of Final Design may be added by contract modification at the appropriate time. At any time, if the Department has the capacity to provide these services, the Department may retain the advertised geotechnical services. Prequalification in the area of Geotechnical Services is not required to be identified in the Consultant's Response to Announcement.

## **XIII. TRAFFIC ENGINEERING**

The selected Consultant will provide the analysis of the existing and proposed operations. Traffic Signal Design and Lighting Design services, if necessary for the completion of Final Design, may be added by Contract Modification at the appropriate time. At any time, if the Department has the capacity to provide these services, the Department may retain the advertised traffic services.

## **XIV. UTILITIES**

The selected Consultant may be required to provide utility related services for this project, which may include construction inspection. The selected Consultant will provide SUE (Subsurface Utility Engineering) work as needed to field-locate utilities. Horizontal and vertical location of existing utilities shown in the roadway plans shall be adjusted by the Consultant as necessary to reflect actual SUE results. The Department will authorize B.U.D. (Before You Dig) to field-locate utilities during preliminary design. The consultant shall perform field surveys to collect the B.U.D. data.

## **XV. PREQUALIFICATION REQUIREMENTS**

To respond to this project the Consultant must be prequalified in the following areas by the response due date of this advertisement:

## ENVIRONMENTAL & UST SERVICES

- UST & Hazmat Preliminary Site Assessment (Phase 1)

## ENVIRONMENTAL ARCHEOLOGY & OTHER SERVICES

- Prehistoric Archaeology
- Historic Archaeology
- Cultural-Historic Analysis
- *Highway Noise Analysis\** (see note below)
- *Environmental Document Writing & Coordination\** (see note below)

## ROADWAY DESIGN

- Rural Roadway Design
- Advanced Traffic Engineering Design & Modeling
- Surveying
- Urban Roadway Design
- *Advanced Drainage Analysis & Design\** (see note below)

## TRAFFIC ENGINEERING

- Traffic Engineering
- *Electrical Engineering Roadway Lighting\** (see note below)
- *Electrical Engineering Traffic Signals\** (see note below)

## TRANSPORTATION PLANNING

- Traffic Forecasting
- Traffic Data Collection
- Pedestrian & Bicycle Planning & Design
- *Travel Demand & Simulation Modeling\** (see note below)

## UTILITY DESIGN

- Utility Preconstruction Coordination
- *Electrical Level 1\** (see note below)
- *Utility Construction Inspection\** (see note below)
- *Gas Level 1\** (see note below)
- *Communication\** (see note below)
- *Water & Sewer Level 1\** (see note below)

## Geotechnical Services\* (see note below)

- *Geotechnical Engineering\**
- *Geotechnical Drilling\**
- *Geotechnical Laboratory Testing\**

## Right of Way\* (see note below)

- *Relocation\**
- *Acquisition\**
- *Appraisal\**
- *Appraisal Review\**

## Structure Design\* (see note below)

- *Spans Under 500 Feet\**

\* Note – These prequalifications are not required with the initial proposal as it is uncertain to the extent practicable if they are necessary. Should these services become necessary during the

*delivery of the project in this or future phases, the selected Consultant team must obtain the required qualifications before providing those services, or bring on a prequalified subconsultant at that time.*

## **XVI. PROCUREMENT SCHEDULE**

Dates other than Response Date are tentative and provided for information only.

- Advertisement Date: December 13, 2022
- Response Date: January 11, 2023 by 4:30 PM ET (Frankfort Time)
- First Selection Meeting: January 17, 2023
- Final Selection: February 1, 2023
- Pre-Design Conference: February 8, 2023
- Consultant Fee Proposal: February 17, 2023
- Contract Negotiations: March 1, 2023
- Notice to Proceed: March 22, 2023

## **XVII. PROJECT SCHEDULE**

- Preliminary Line and Grade Meeting October 2023
- Submit Design Executive Summary November 2023

## **XVIII. EVALUATION FACTORS**

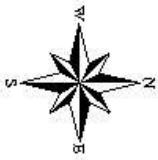
Consultants will be evaluated by the selection committee based on the following weighted factors:

1. Project approach and proposed procedures to accomplish the services for the project. (20 Points)
2. Relative experience of consultant personnel assigned to project team with highway project for KYTC and/or federal, local or other state governmental agencies. (15 Points)
3. Past record of performance on projects similar in type and complexity. (15 Points)
4. Capacity to comply with project schedule. (10 Points)
5. DBE Participation Plan. (4 Points)
6. Knowledge of the locality and familiarity of the general geographic area. (2 Points)

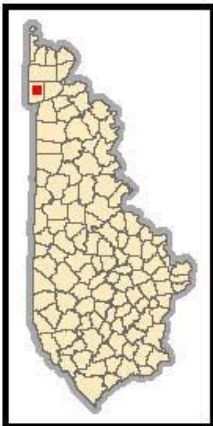
## **XIX. SELECTION COMMITTEE MEMBERS**

1. James Tilley, P.E., User Division
2. Karl Sawyer, P.E., User Division
3. Erika Drury, P.E., Secretary's Pool
4. Amanda Desmond, P.E., Secretary's Pool
5. Bart Bryant, P.E., Governor's Pool

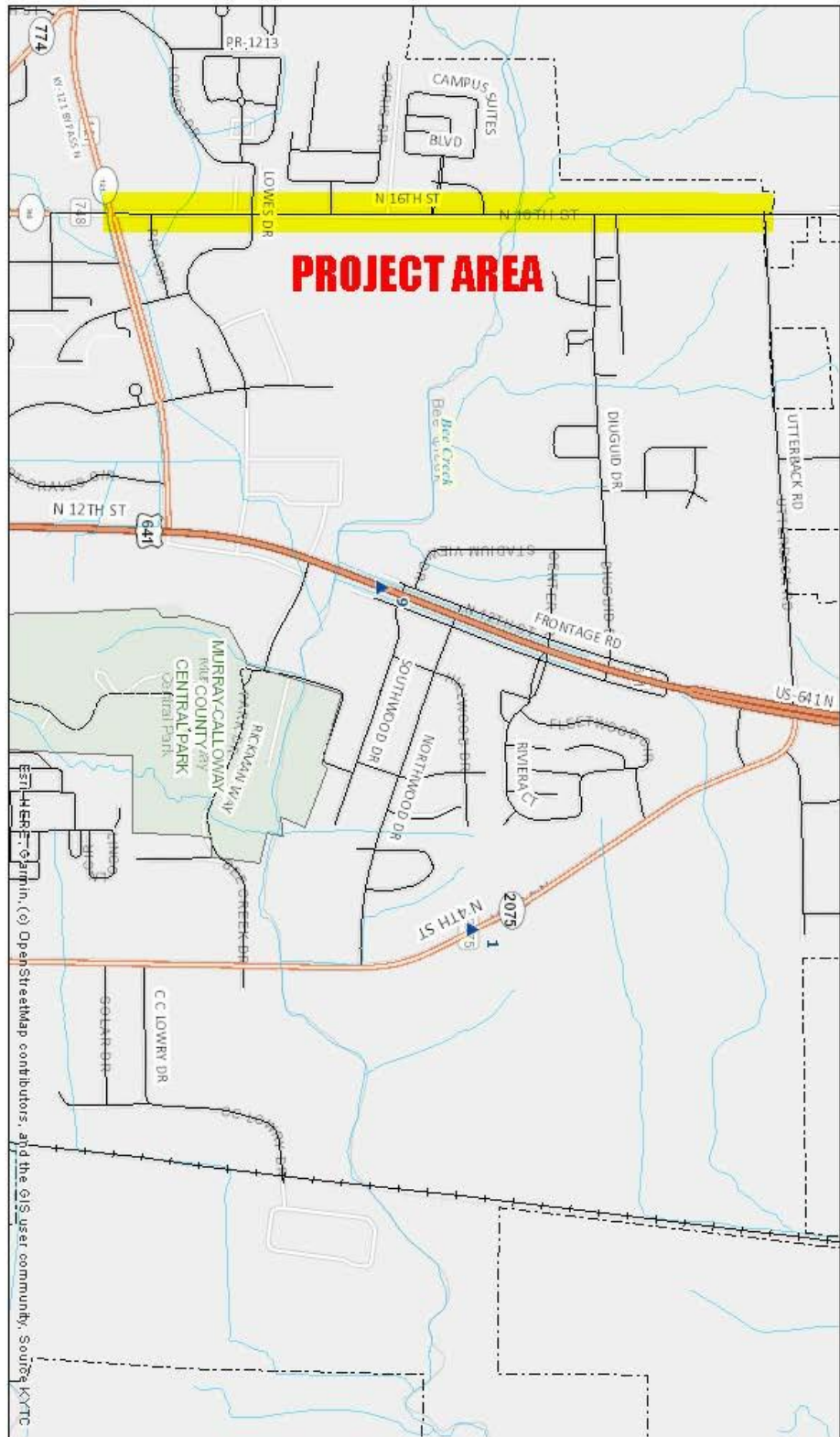
**XX. AREA MAP**



**CS-1047**  
**Calloway County**  
**Item No. 1-80200.00**  
**Congestion Mitigation from**  
**KY 121 to Utterback Road**



**Author: Professional Services**  
**Date: 10/13/2022**



1-80200 Calloway County